

# 395 Roberts Road

395 Roberts Rd, Campbellsville KY 42718, Campbellsville, Kentucky 42718 - Taylor County



## Property Details

**Type of space:** Industrial  
**Min Size:** 144,725 sqft  
**Max Size:** 144,725 sqft  
**Last Updated:** 2/27/2020

## State Contact

**Company:** Kentucky Cabinet for Economic Development  
**Contact Name:** Amy Bowman  
**Address:** 300 West Broadway, Frankfort, KY 40601  
**City:** Frankfort  
**State:** Kentucky  
**Phone:** 502-564-7670  
**Email:** [EconDev@ky.gov](mailto:EconDev@ky.gov)

## County ED Contact

**Company:** Team Taylor County Economic Development Authority  
**Contact Name:** Ron McMahan  
**Address:** 205 N Columbia Ave  
**City:** Campbellsville  
**State:** Kentucky  
**Phone:** 270-465-9636  
**Fax:** 270-465-0607  
**Email:** [Ron@TeamTaylorCounty.com](mailto:Ron@TeamTaylorCounty.com)  
**Website:** [www.teamtaylorcounty.com](http://www.teamtaylorcounty.com)

## Documents

[Building Map](#)  
[KCREA Listing](#)  
[Building Brochure](#)

## Availability

**PropertyID:** 217-019  
**For Sale:** Yes  
**Sale Price:** 1750000  
**Sale Terms:** \$12.09 PSF/Cash to Seller

## Description

Former Stanley Black and Decker Manufacturing facility in Campbellsville, KY. The property offers approximately 144,725 SF on 40 acres. The property has a sprinkler system and is believed to have two 3000 amp, 480 volt, 3 phase electrical services. There are some exhausts fans and compressed air lines throughout the facility.

Jake F Mills

[Commercial Kentucky, Inc.](#)

<https://www.kcrea.com/listing/30563047/395-Roberts-Road-Campbellsville-KY-42718>

## Site Details

**Zoning:** Not zoned  
**Ownership:** Private

## Transportation

**Nearest Airport:** Louisville International Airport  
**Distance to Airport:** Louisville International Airport is 82.7 miles northwest of the building via  
**Nearest Interstate:** I-65  
**Highway Access Description:** Exit 91 of I-65 is 41.4 miles northwest of the building  
**Distance to Interstate:** 41.4 miles  
**Nearest Riverport:** Louisville-Jefferson County Riverport  
**Distance to Riverport:** 92.0 miles

## Utilities

**Electricity:** Kentucky Utilities

**Natural Gas:** Atmos Energy Corporation  
**Sewer:** Campbellsville Municipal Water & Sewer System  
**Sewer Line:** 8  
**Water:** Campbellsville Municipal Water & Sewer System  
**Water Line:** 16  
**Broadband:** Brandenburg Cellular Corporation- Fixed Wireless

#### Plant Specific

**Minimum Ceiling:** 16  
**Maximum Ceiling:** 235  
**Sprinklered:** Yes  
**Sprinkler (Wet):** True  
**Floor Type:** Concrete  
**Office Sqft:** 20650  
**Warehouse Sqft:** 124075

#### General Information

**Total Square Feet:** 144,725  
**Total Acres:** 40.0  
**Year Built:** 1964  
**Former Use:** Stanley Black and Decker Manufacturing facility

#### Agent Contact

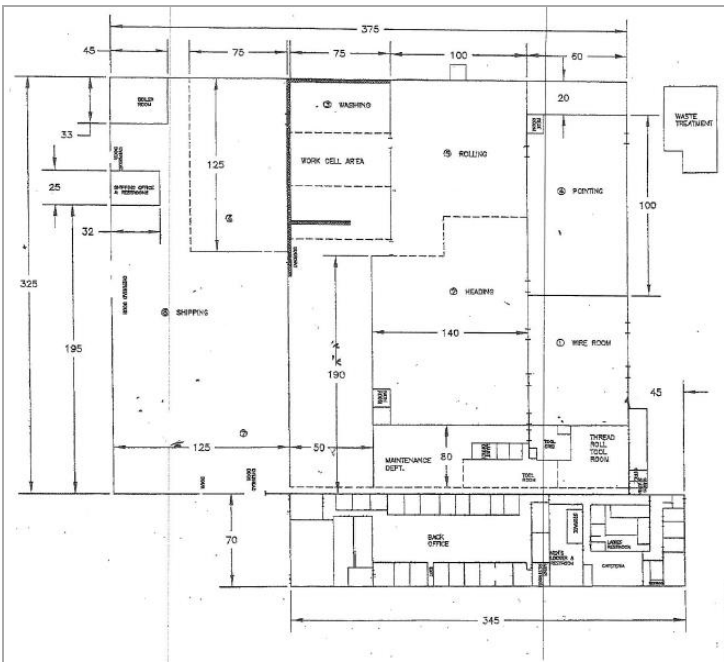
**Agent Company:** Cushman & Wakefield | Commercial Kentucky



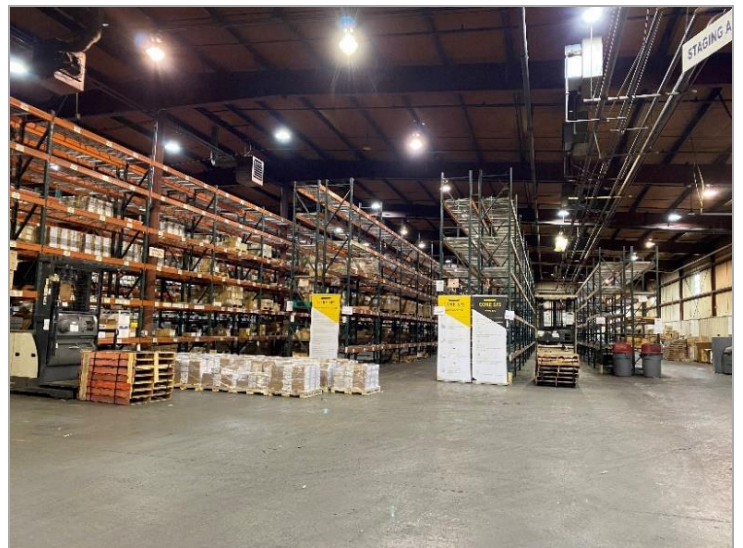
B217-019\_23367568\_Image\_11\_RBW.jpg



395\_Roberts\_Road\_aerial2.jpg



395\_Roberts\_Road\_Floorplan.jpg



395\_Roberts\_Road\_inside.jpg

**FOR SALE**  
**395 ROBERTS ROAD**  
Campbellsville, KY 42718

**INDUSTRIAL SPACE FOR SALE 144,725 SF**

**PROPERTY FEATURES**

- 144,725 SF total building
- 124,075 SF warehouse
- 20,650 SF office
- 40 Acres
- Four (4) dock doors
- Two (2) 8' x 10'
- Two (2) 8' x 8'
- Clear Heights 16'3" – 23'5"
- Ample parking
- Heavy Power
- Easy access to I-68 and I-70

**MARKET DISTANCES**

- Louisville – 85 miles
- Lexington – 80 miles
- Bowling Green – 80 miles
- Somerset – 60 miles
- Elizabethtown – 45 miles

**CAMPBELLVILLE INDUSTRIAL PARK**

For more information, please contact:

**ROBERT B. WALKER, SIOR, CCIM**  
Senior Director  
Certified Supply Chain Professional  
+1 502 719 3254  
walker@commercialkentucky.com

**JAKE MILLS**  
Associate  
+1 502 719 3252  
jmills@commercialkentucky.com

333 E. Main Street, Suite 510  
Louisville, KY 40202  
phone: +1 502 589 5150  
www.commercialkentucky.com

This information is provided for informational purposes only. It is not intended to constitute an offer of real estate. The information is provided for informational purposes only. It is not intended to constitute an offer of real estate. The information is provided for informational purposes only. It is not intended to constitute an offer of real estate.

395\_Roberts\_Road\_Page\_1.jpg