

395 Roberts Road

395 Roberts Rd, Campbellsville KY 42718, Campbellsville, Kentucky 42718 - Taylor County



Property Details

Latitude/Longitude: 37.3462, -85.3283
Type of space: Industrial
Min Size: 144,725 sqft
Max Size: 144,725 sqft
Last Updated: 4/19/2021

State Contact

Company: Kentucky Cabinet for Economic Development
Contact Name: Amy Bowman
Address: 300 West Broadway, Frankfort, KY 40601
City: Frankfort
State: Kentucky
Phone: 502-564-7670
Email: EconDev@ky.gov
Website: <https://ced.ky.gov>



Contact Information

Company: Team Taylor County
Contact Name: Ron McMahan
Address: 205 N Columbia Ave
City: Campbellsville
State: Kentucky
Phone: 270-465-9636
Cell: 270-403-6525
Email: Ron@TeamTaylorCounty.com
Website: www.teamtaylorcounty.com

General Information

PropertyID: 217-019
Total Square Feet: 144,725
Total Acres: 40.0
Year Built: 1964
Former Use: Stanley Black and Decker Manufacturing facility

Site Details

Zoning: Not zoned
Ownership: Private

Plant Specific

Minimum Ceiling: 16
Maximum Ceiling: 235
Sprinklered: Yes
Sprinkler (Wet): True
Floor Type: Concrete
Office Sqft: 20650
Warehouse Sqft: 124075

Availability

For Sale: Yes
Sale Price: \$1,750,000
Sale Terms: \$12.09 PSF/Cash to Seller

Utilities

Electricity on Site: Kentucky Utilities
Natural Gas: Atmos Energy Corporation
Sewer: Campbellsville Municipal Water & Sewer System
Sewer Line: 8

Documents

[Building Map](#)
[KCREA Listing](#)
[Building Brochure](#)

Water: Campbellsville Municipal Water & Sewer System

Water Line: 16

Broadband: Brandenburg Cellular Corporation- Fixed Wireless

Incentives

Located in Opportunity Zone?: Yes

Transportation

Nearest Airport: Louisville International Airport

Airport Access Description: Louisville International Airport is 82.7 miles northwest of the building via

Nearest Interstate: I-65

Highway Access Description: Exit 91 of I-65 is 41.4 miles northwest of the building

Distance to Interstate (miles): 41.4

Nearest Riverport: Louisville-Jefferson County Riverport

Distance to Riverport (miles): 92.0

Agent Contact

Agent Company: Cushman & Wakefield | Commercial Kentucky

Agent Address: 333 E. Main Street, Suite 510, Louisville, KY, 40202

Agent email: jmills@commercialkentucky.com

Agent name: Jake Mills

Agent phone: 270 562 0024

Description

Former Stanley Black and Decker Manufacturing facility in Campbellsville, KY. The property offers approximately 144,725 SF on 40 acres. The property has a sprinkler system and is believed to have two 3000 amp, 480 volt, 3 phase electrical services. There are some exhausts fans and compressed air lines throughout the facility.

Jake F Mills

[Commercial Kentucky, Inc.](#)

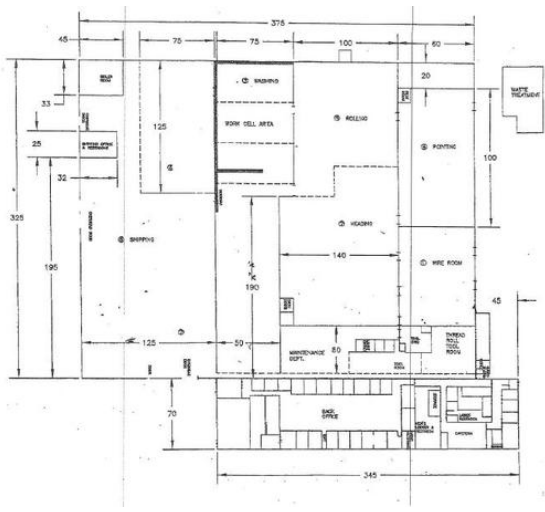
<https://www.kcrea.com/listing/30563047/395-Roberts-Road-Campbellsville-KY-42718>



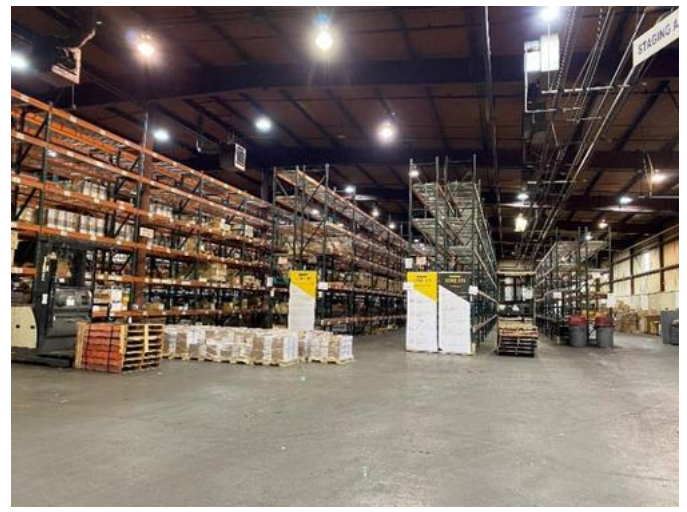
B217-019_23367568_Image_11_RBW.jpg



395_Roberts_Road_aerial2.jpg



395_Roberts_Road_Floorplan.jpg



395_Roberts_Road_inside.jpg

CUSHMAN & WAKEFIELD
Commercial Kentucky

FOR SALE
395 ROBERTS ROAD
Campbellsville, KY 42718

INDUSTRIAL SPACE FOR SALE 144,725 SF




PROPERTY FEATURES

- 144,725 SF total building
- 124,875 SF warehouse
- 20,650 SF office
- 40 Acres
- Four (4) dock doors
- Two (2) 8' x 10'
- Two (2) 8' x 8'
- Clear Heights 16'3" - 23'5"
- Ample parking
- Heavy Power
- Easy access to I-68 and I-70

MARKET DISTANCES

- Louisville - 85 miles
- Lexington - 80 miles
- Bowling Green - 80 miles
- Somerset - 60 miles
- Elizabethtown - 45 miles

CAMPBELLVILLE INDUSTRIAL PARK

For more information, please contact
ROBERT B. WALKER, SIOR, CCM
 Senior Director
 Certified Supply Chain Professional
 +1 502 719 3254
 rbwalker@commercialkentucky.com

JANE MILLS
 Associate
 +1 502 719 3252
 jnmills@commercialkentucky.com

333 E. Main Street, Suite 510
 Louisville, KY 40202
 phone: +1 502 368 6150
 www.commercialkentucky.com

395_Roberts_Road_Page_1.jpg